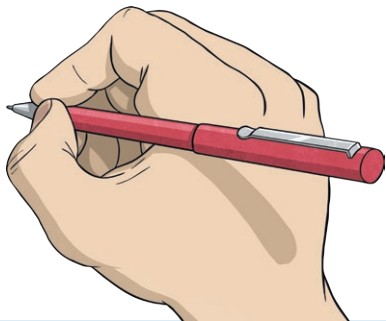


Features of Poetry

Examples

- Acrostic
- Cinquain
- Free verse
- Haiku
- Limerick
- Narrative
- Nonsense
- Shape
- Sonnet



Structure

- Written in verses
- Each line starts with a capital letter
- A comma usually at the end of each line



Language Features

- Alliteration
- Figurative language
- Imagery
- Metaphor
- Onomatopoeia
- Pattern
- Personification
- Repetition
- Rhyme
- Rhythm
- Simile
- Verse



visit [twinkl.com](https://www.twinkl.com)