



# Converting Metric Measurements of Length

I can convert metric measures involving length.

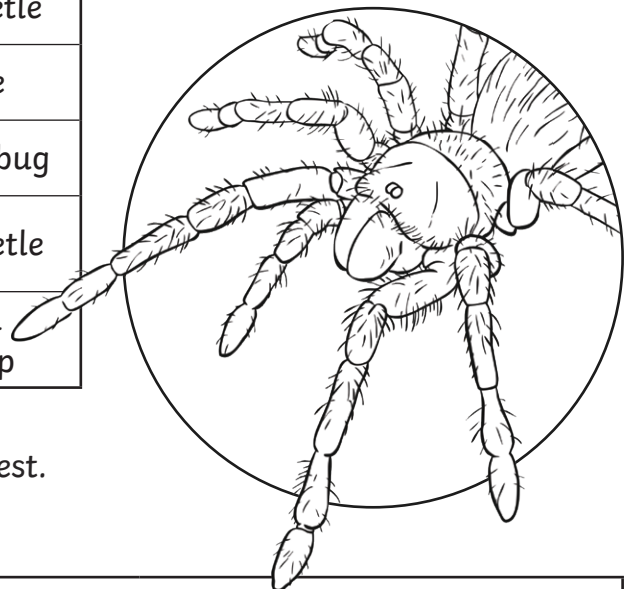


- 1) This table shows the average lengths of different species of insect. Complete the table.

Average Lengths of Insects			
Insect	Centimetres	Millimetres	Centimetres and Millimetres
giant burrowing cockroach	8.3cm	83mm	8cm 3mm
elephant beetle		115mm	
honeybee		15mm	
giant water bug		116mm	
Hercules beetle		51mm	
tarantula hawk wasp		54mm	

- 2) Use < or > to compare the lengths of the insects.

giant water bug		Hercules beetle
elephant beetle		honey bee
honeybee		giant water bug
tarantula hawk wasp		elephant beetle
giant burrowing cockroach		tarantula hawk wasp



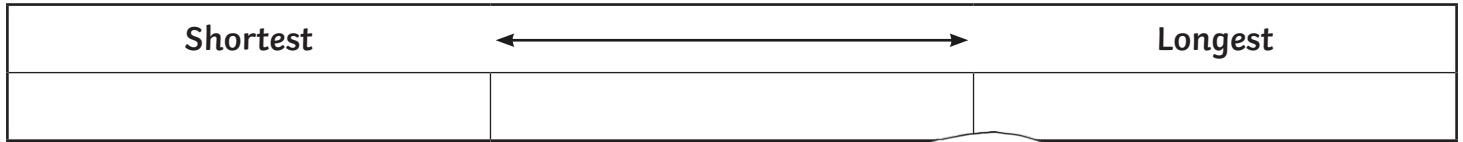
- 3) Order these sets of insects from shortest to longest.

- a) elephant beetle, honeybee, giant water bug

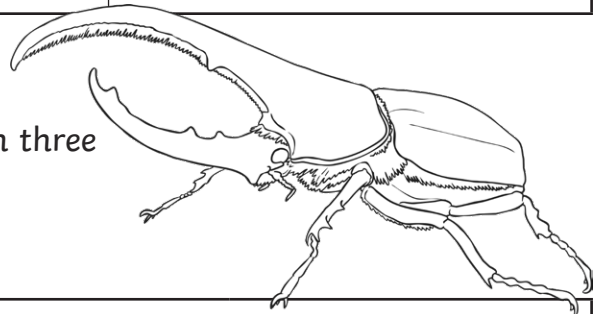
Shortest	←————→	Longest



b) tarantula hawk wasp, Hercules beetle, giant burrowing cockroach



4) This table shows the average lengths of different species of reptile. The lengths have been written in three different ways.



a) Complete the table.

Average Lengths of Reptiles			
Reptile	Metres	Centimetres	Metres and Centimetres
saltwater crocodile	4.55m	455cm	4m 55cm
American alligator	3.4m		
green sea turtle	1.12m		
giant tortoise	1.48m		
Komodo dragon	2.59m		
reticulated python	3.95m		

b) The average length of an adult male tiger is 3.2m.  
Sort the reptiles into the correct category:

Shorter than a tiger	Longer than a tiger





# Converting Metric Measurements of Length **Answers**

Question	Answer			
1.	This table shows the average lengths of different species of insect. Complete the table.			
	<b>Average Lengths of Insect</b>			
	<b>Insect</b>	<b>Centimetres</b>	<b>Millimetres</b>	<b>Centimetres and Millimetres</b>
	giant burrowing cockroach	8.3cm	83mm	8cm 3mm
	elephant beetle	<i>11.5cm</i>	115mm	<i>11cm 5mm</i>
	honeybee	<i>1.5cm</i>	15mm	<i>1cm 5mm</i>
	giant water bug	<i>11.6cm</i>	116mm	<i>11cm 6mm</i>
	Hercules beetle	<i>5.1cm</i>	51mm	<i>5cm 1mm</i>
	tarantula hawk wasp	<i>5.4cm</i>	54mm	<i>5cm 4mm</i>
2.	Use < or > to compare the insects.			
	giant water bug	>	Hercules beetle	
	elephant beetle	>	honey bee	
	honeybee	<	giant water bug	
	tarantula hawk wasp	<	elephant beetle	
	giant burrowing cockroach	>	tarantula hawk wasp	
3.	Order these sets of insects from shortest to longest.			
a	<i>honey bee</i>	<i>elephant beetle</i>	<i>giant water bug</i>	
b	<i>Hercules beetle</i>	<i>tarantula hawk wasp</i>	<i>giant burrowing cockroach</i>	



<b>4.</b>	This table shows the average lengths of different species of reptile. The lengths have been written in three different ways. Complete the table.			
a	<b>Average Length of Reptiles</b>			
	<b>Reptile</b>	<b>Metres</b>	<b>Centimetres</b>	<b>Metres and Centimetres</b>
	saltwater crocodile	4.55m	455cm	4m 55cm
	American alligator	3.4m	<b>340cm</b>	<b>3m 40cm</b>
	green sea turtle	1.12m	<b>112cm</b>	<b>1m 12cm</b>
	giant tortoise	1.48m	<b>148cm</b>	<b>1m 48cm</b>
	Komodo dragon	2.59m	<b>259cm</b>	<b>2m 59cm</b>
	reticulated python	3.95m	<b>395cm</b>	<b>3m 95cm</b>
	The average length of an adult male tiger is 3.2m. Sort the reptiles into the correct category:			
b	<b>Shorter than a tiger</b>		<b>Longer than a tiger</b>	
	<i>green sea turtle</i>		<i>saltwater crocodile</i>	
	<i>giant tortoise</i>		<i>American alligator</i>	
	<i>Komodo dragon</i>		<i>reticulated python</i>	



# Converting Metric Measurements of Length

I can convert metric measures involving length.

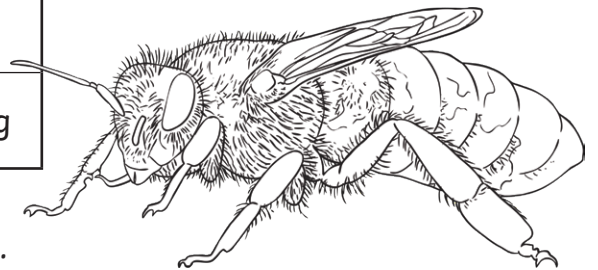


- 1) This table shows the average lengths of different species of insect. The lengths have been written in three different ways. Complete the table.

Average Lengths of Insects			
Insect	Centimetres	Millimetres	Centimetres and Millimetres
giant burrowing cockroach	8.3cm	83mm	8cm 3mm
elephant beetle		115mm	
honeybee	1.5cm		
giant water bug			11cm 6mm
Hercules beetle		51mm	
tarantula hawk wasp	6.8cm		
mountain beaver flea			1cm 2mm
giant earwig		84mm	

- 2) Use < or > to compare the lengths of the insects.

giant water bug		mountain beaver flea
giant earwig		honeybee
tarantula hawk wasp		giant water bug



- 3) Order these sets of insects from longest to shortest.  
a) elephant beetle, giant earwig, honeybee, giant water bug

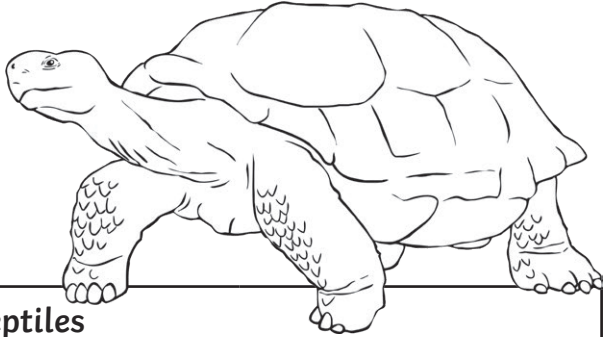
Longest	←—————→		Shortest



b) Hercules beetle, giant burrowing cockroach, mountain beaver flea, honeybee

<b>Longest</b>	←—————→	<b>Shortest</b>

4) This table shows the average lengths of different species of reptile. The lengths have been written in three different ways.



a) Complete the table.

Average Lengths of Reptiles			
Reptile	Metres	Centimetres	Metres and Centimetres
saltwater crocodile	4.55m	455cm	4m 55cm
American alligator			3m 40cm
green sea turtle	1.12m		
giant tortoise		148cm	
Komodo dragon	2.59m		
reticulated python		395cm	
loggerhead sea turtle		95cm	
Galápagos tortoise			1m 85cm

b) The average length of a bottlenose dolphin is 2.6m.  
Sort the reptiles into the correct category:

Shorter than a bottlenose dolphin	Longer than a bottlenose dolphin



# Converting Metric Measurements of Length **Answers**

Question	Answer			
1.	This table shows the average lengths of different species of insect. The lengths have been written in three different ways. Complete the table.			
	Average Length of Insects			
	Insect	Centimetres	Millimetres	Centimetres and Millimetres
	giant burrowing cockroach	8.3cm	83mm	8cm 3mm
	elephant beetle	<i>11.5cm</i>	115mm	<i>11cm 5mm</i>
	honeybee	1.5cm	<i>15mm</i>	<i>1cm 5mm</i>
	giant water bug	<i>11.6cm</i>	<i>116mm</i>	11cm 6mm
	Hercules beetle	<i>5.1cm</i>	51mm	<i>5cm 1mm</i>
	tarantula hawk wasp	6.8cm	<i>68mm</i>	<i>6cm 8mm</i>
	mountain beaver flea	<i>1.2cm</i>	<i>12mm</i>	1cm 2mm
	giant earwig	<i>8.4cm</i>	84mm	<i>8cm 4mm</i>
2.	Use < or > to compare the insects.			
	giant water bug	>	mountain beaver flea	
	giant earwig	>	honeybee	
	tarantula hawk wasp	<	giant water bug	
3.	Order these sets of insects from longest to shortest.			
a	<i>giant water bug</i>	<i>elephant beetle</i>	<i>giant earwig</i>	<i>honeybee</i>
b	<i>giant burrowing cockroach</i>	<i>Hercules beetle</i>	<i>honeybee</i>	<i>mountain beaver flea</i>



<b>4.</b>	This table shows the average lengths of different species of reptile. The lengths have been written in three different ways. Complete the table.			
<b>a</b>	<b>Average Length of Reptiles</b>			
	<b>Reptile</b>	<b>Metres</b>	<b>Centimetres</b>	<b>Metres and Centimetres</b>
	saltwater crocodile	4.55m	455cm	4m 55cm
	American alligator	<i>3.4m</i>	<i>340cm</i>	3m 40cm
	green sea turtle	1.12m	<i>112cm</i>	<i>1m 12cm</i>
	giant tortoise	<i>1.48m</i>	148cm	<i>1m 48cm</i>
	Komodo dragon	2.59m	259cm	<i>2m 59cm</i>
	reticulated python	<i>3.95m</i>	395cm	<i>3m 95cm</i>
	loggerhead sea turtle	<i>0.95m</i>	95cm	<i>0m 95cm</i>
	Galápagos tortoise	<i>1.85m</i>	<i>185cm</i>	1m 85cm
	The average length of a bottlenose dolphin is 2.6m. Sort the reptiles into the correct category:			
<b>b</b>	<b>Shorter than a bottlenose dolphin</b>		<b>Longer than a bottlenose dolphin</b>	
	<i>green sea turtle</i>		<i>saltwater crocodile</i>	
	<i>giant tortoise</i>		<i>American alligator</i>	
	<i>komodo dragon</i>		<i>reticulated python</i>	
	<i>loggerhead sea turtle</i>			
	<i>Galápagos tortoise</i>			





# Converting Metric Measurements of Length

I can convert metric measures involving length.

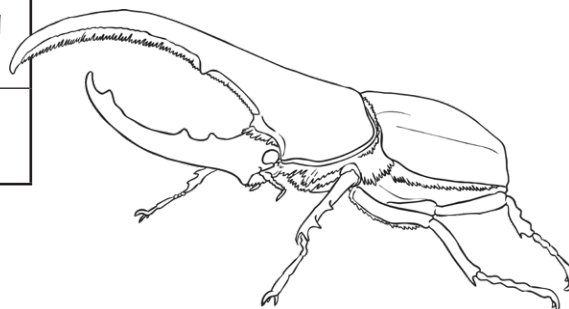


- 1) This table shows the average lengths of different species of insect. The lengths have been written in three different ways. Complete the table.

Average Lengths of Insects			
Insect	Centimetres	Millimetres	Centimetres and Millimetres
giant burrowing cockroach	8.3cm	83mm	8cm 3mm
elephant beetle	11.5cm		
honeybee			1cm 5mm
giant water bug		116mm	
Hercules beetle	5.1cm		
tarantula hawk wasp		68mm	
mountain beaver flea			1cm 2mm
giant earwig	8.4cm		

- 2) Use < or > to compare the lengths of the insects.

giant water bug		giant earwig
Hercules beetle		elephant beetle
mountain beaver flea		giant burrowing cockroach
tarantula hawk wasp		Hercules beetle



- 3) Order all eight insects from shortest to longest.

a)	b)	c)	d)
e)	f)	g)	h)

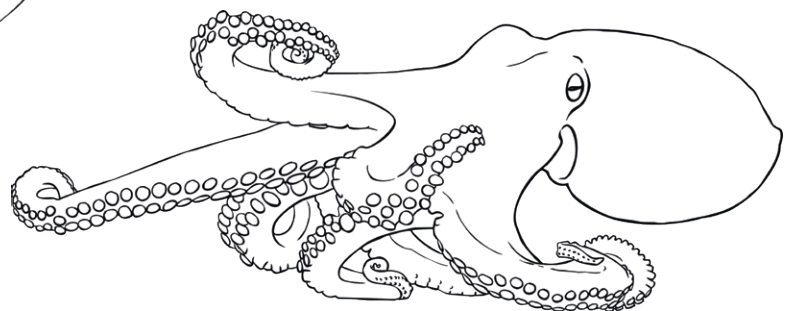
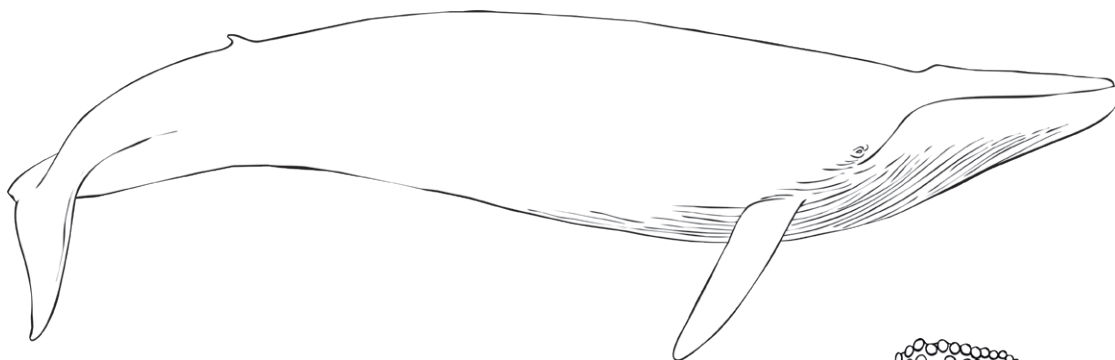


4) This table shows the average lengths of different sea creatures. The lengths have been written in three different ways. Complete the table.

Average Lengths of Sea Creatures			
Sea Creature	Metres	Centimetres	Metres and Centimetres
minke whale	9.61m	961cm	9m 61cm
blue whale	28.75m		
bottlenose dolphin		262cm	
sea snake			1m 35cm
basking shark	7.35m		
giant Pacific octopus			4m 25cm
Maui's dolphin		165cm	
Japanese spider crab	5.51m		

5) Sort the sea creatures into the correct category.

Shorter than 3 metres	Between 3 and 6 metres	Longer than 6 metres





# Converting Metric Measurements of Length **Answers**

Question	Answer																																								
1.	This table shows the average lengths of different species of insect. The lengths have been written in three different ways. Complete the table.																																								
	<table border="1"><thead><tr><th colspan="4">Average Length of Insects</th></tr><tr><th>Insect</th><th>Centimetres</th><th>Millimetres</th><th>Centimetres and Millimetres</th></tr></thead><tbody><tr><td>giant burrowing cockroach</td><td>8.3cm</td><td>83mm</td><td>8cm 3mm</td></tr><tr><td>elephant beetle</td><td>11.5cm</td><td><i>115mm</i></td><td><i>11cm 5mm</i></td></tr><tr><td>honeybee</td><td><i>1.5cm</i></td><td><i>15mm</i></td><td>1cm 5mm</td></tr><tr><td>giant water bug</td><td><i>11.6cm</i></td><td>116mm</td><td><i>11cm 6mm</i></td></tr><tr><td>Hercules beetle</td><td>5.1cm</td><td><i>51mm</i></td><td><i>5cm 1mm</i></td></tr><tr><td>tarantula hawk wasp</td><td><i>6.8cm</i></td><td>68mm</td><td><i>6cm 8mm</i></td></tr><tr><td>mountain beaver flea</td><td><i>1.2cm</i></td><td><i>12mm</i></td><td>1cm 2mm</td></tr><tr><td>giant earwig</td><td>8.4cm</td><td><i>84mm</i></td><td><i>8cm 4mm</i></td></tr></tbody></table>	Average Length of Insects				Insect	Centimetres	Millimetres	Centimetres and Millimetres	giant burrowing cockroach	8.3cm	83mm	8cm 3mm	elephant beetle	11.5cm	<i>115mm</i>	<i>11cm 5mm</i>	honeybee	<i>1.5cm</i>	<i>15mm</i>	1cm 5mm	giant water bug	<i>11.6cm</i>	116mm	<i>11cm 6mm</i>	Hercules beetle	5.1cm	<i>51mm</i>	<i>5cm 1mm</i>	tarantula hawk wasp	<i>6.8cm</i>	68mm	<i>6cm 8mm</i>	mountain beaver flea	<i>1.2cm</i>	<i>12mm</i>	1cm 2mm	giant earwig	8.4cm	<i>84mm</i>	<i>8cm 4mm</i>
Average Length of Insects																																									
Insect	Centimetres	Millimetres	Centimetres and Millimetres																																						
giant burrowing cockroach	8.3cm	83mm	8cm 3mm																																						
elephant beetle	11.5cm	<i>115mm</i>	<i>11cm 5mm</i>																																						
honeybee	<i>1.5cm</i>	<i>15mm</i>	1cm 5mm																																						
giant water bug	<i>11.6cm</i>	116mm	<i>11cm 6mm</i>																																						
Hercules beetle	5.1cm	<i>51mm</i>	<i>5cm 1mm</i>																																						
tarantula hawk wasp	<i>6.8cm</i>	68mm	<i>6cm 8mm</i>																																						
mountain beaver flea	<i>1.2cm</i>	<i>12mm</i>	1cm 2mm																																						
giant earwig	8.4cm	<i>84mm</i>	<i>8cm 4mm</i>																																						
2.	Use < or > to compare the insects.																																								
	<table border="1"><tbody><tr><td>giant water bug</td><td>&gt;</td><td>giant earwig</td></tr><tr><td>Hercules beetle</td><td>&lt;</td><td>elephant beetle</td></tr><tr><td>mountain beaver flea</td><td>&lt;</td><td>giant burrowing cockroach</td></tr><tr><td>tarantula hawk wasp</td><td>&gt;</td><td>Hercules beetle</td></tr></tbody></table>	giant water bug	>	giant earwig	Hercules beetle	<	elephant beetle	mountain beaver flea	<	giant burrowing cockroach	tarantula hawk wasp	>	Hercules beetle																												
giant water bug	>	giant earwig																																							
Hercules beetle	<	elephant beetle																																							
mountain beaver flea	<	giant burrowing cockroach																																							
tarantula hawk wasp	>	Hercules beetle																																							
3.	Order all eight insects from shortest to longest.																																								
	<table border="1"><tbody><tr><td>a) <i>mountain beaver flea</i></td><td>b) <i>honeybee</i></td><td>c) <i>Hercules beetle</i></td><td>d) <i>tarantula hawk wasp</i></td></tr><tr><td>e) <i>giant burrowing cockroach</i></td><td>f) <i>giant earwig</i></td><td>g) <i>elephant beetle</i></td><td>h) <i>giant water bug</i></td></tr></tbody></table>	a) <i>mountain beaver flea</i>	b) <i>honeybee</i>	c) <i>Hercules beetle</i>	d) <i>tarantula hawk wasp</i>	e) <i>giant burrowing cockroach</i>	f) <i>giant earwig</i>	g) <i>elephant beetle</i>	h) <i>giant water bug</i>																																
a) <i>mountain beaver flea</i>	b) <i>honeybee</i>	c) <i>Hercules beetle</i>	d) <i>tarantula hawk wasp</i>																																						
e) <i>giant burrowing cockroach</i>	f) <i>giant earwig</i>	g) <i>elephant beetle</i>	h) <i>giant water bug</i>																																						



4.

This table shows the average lengths of different species of reptile. The lengths have been written in three different ways. Complete the table.

Average Lengths of Sea Creatures

Sea Creature	Metres	Centimetres	Metres and Centimetres
minke whale	8.35m	961cm	9m 61cm
blue whale	28.75m	<b>2875cm</b>	<b>28m 75cm</b>
bottlenose dolphin	<b>2.62m</b>	262cm	<b>2m 62cm</b>
sea snake	<b>1.35m</b>	<b>135cm</b>	1m 35cm
basking shark	7.35m	<b>735cm</b>	<b>7m 35cm</b>
giant Pacific octopus	<b>4.25m</b>	<b>425cm</b>	4m 25cm
Maui's dolphin	<b>1.65m</b>	165cm	<b>1m 65cm</b>
Japanese spider crab	5.51m	<b>551cm</b>	<b>5m 51cm</b>

5.

Sort the sea creatures into the correct category.

Shorter than 3 metres	Between 3 and 6 metres	Longer than 6 metres
<i>bottlenose dolphin</i>	<i>giant Pacific octopus</i>	<i>minke whale</i>
<i>sea snake</i>	<i>Japanese spider crab</i>	<i>blue whale</i>
<i>Maui's dolphin</i>		<i>basking shark</i>